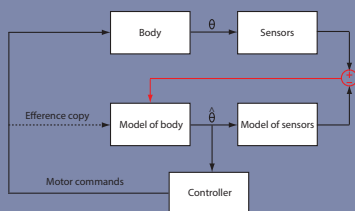
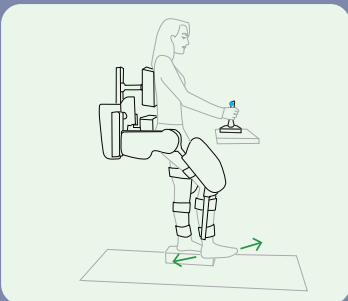
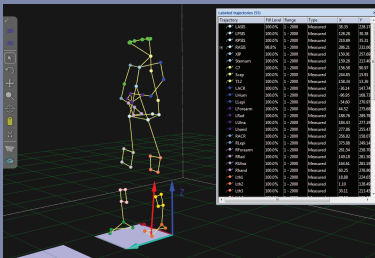
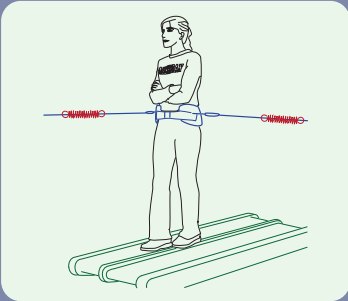


# Help use **science** to inform physical rehabilitation practices!

## REHABILITATION BIOMECHANICS LABORATORY



We are looking for motivated undergraduate and graduate research assistants to help with laboratory research in motor learning, motor control and biomechanics

## RESEARCH PROJECTS

We conduct experiments with human participants to develop and test theories of motor learning and control using **optical motion capture, electromyography, force plates, and robotic devices.**

- Adaptive robotic assistance for motor learning of walking
- Assessment of proprioceptive sense in persons with spinal cord injury

## GET INVOLVED

If you are a motivated student, you can join the lab for credit by enrolling in ENS 499/798, or we may hire you as a paid research assistant

- Gain invaluable experience with experimental testing
- Learn if a career in research and graduate school is right for you

## RESPONSIBILITIES

- Human subject testing
- Experimental design, data collection, processing and analysis
- Weekly lab meetings

## QUALIFICATIONS

- Interest in biomechanics, motor learning and control
- Dependability and initiative
- Computer experience
- Programming skills a plus

## CONTACT US

If you are interested and think you might like to join the lab, please email your resume and unofficial transcripts to Dr. Antoinette Domingo at [adomingo@mail.sdsu.edu](mailto:adomingo@mail.sdsu.edu).

Antoinette Domingo, PT, PhD  
Office: ENS 124  
Phone: 594-3289  
[adomingo@mail.sdsu.edu](mailto:adomingo@mail.sdsu.edu)